

KEEP BUSH RURAL



Say No To ReZoning!

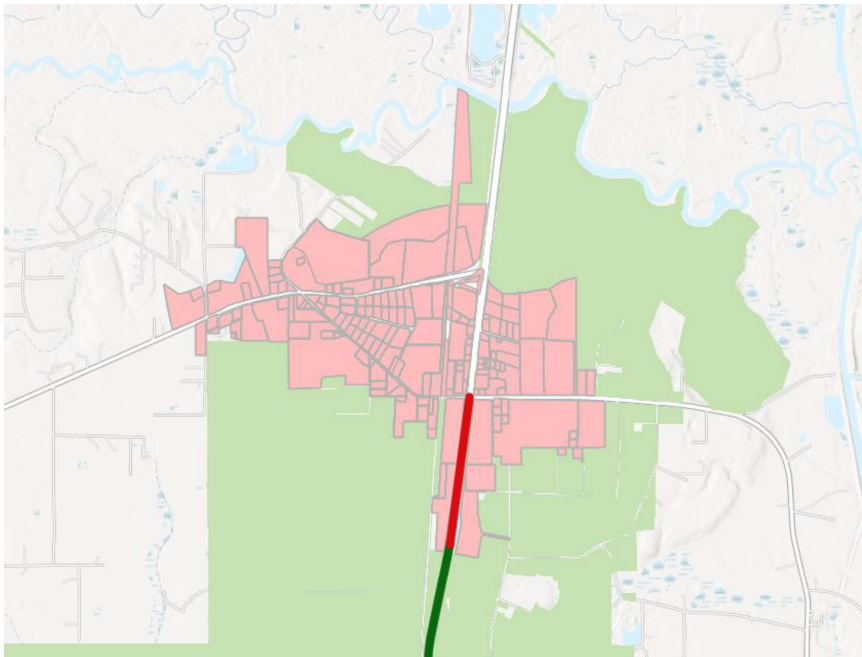
On October, 24th the St. Tammany Parish Planning & Zoning commission sent out 400 letters to “community stakeholders” with links to their proposed changes for zoning along the 3241 corridor in Bush and Talisheek. This letter also contained information about an informal meeting that was held November 12th and a second meeting that was held December 2nd in council chambers on Koop Drive.

The map below shows the area where they want to create a “pedestrian oriented town center” and remove the rural overlay and manufactured home overlays. During the December 2nd meeting, planning officials indicated that not only were they planning to reduce lot size but would encourage apartment buildings as well as subdivisions. The parish has also designated the areas in (shown in green below) as “environmentally sensitive zones”, which are open to conservation subdivisions. Many of us may not mind a few commercial businesses such as a restaurant, bank, or pharmacy here in Bush. However, the sheer scale of what is being suggested would destroy the established character of the entire area.

Find the full proposal here:

<https://storymaps.arcgis.com/stories/91e0f6e8d14a49cd974328f8ed336293>

or on our website at <https://keepbushrural.net>



- Create a mixed-use, pedestrian oriented town center
- Increase building heights and densities to support a vibrant, small-town, urban atmosphere.
- Permit a mix of residential, commercial, and retail uses, prioritizing ground-floor retail and restaurant spaces.
- Require buildings to face the street, creating an active and engaging streetscape.
- Locate off-street parking behind buildings, maximizing pedestrian space and enhancing street appeal; Prioritized walkable neighborhoods and mixes of uses in Town Centers.
- To facilitate this transformation, the area proposes to remove the Rural Overlay District and the Manufactured Home Overlay District for this district.

For more information:
keepbushrural@aol.com

Visit us on the Web:
<https://keepbushrural.net>

Join the KBR,Bush, La group on Facebook:
<https://www.facebook.com/share/g/1ZJg8NZJC6/>

